


cyclonic  
bagless

# EVS

## next generation

The Electron power unit, 'the heart of the ducted cleaning system' is constructed only with Quality Materials and Workmanship, assuring years of trouble free vacuuming.

### Power Unit Features

- ✓ Injected molded from high impact, high temperature ABS polycarbonate and polypropylene plastics,
  - ✓ - provides greater strength and durability.
  - ✓ - will not dent and will last a house time.
  - ✓ - rust and corrosion proof.
  - ✓ - excellent for areas where there is excessive humidity and ideal for coastal areas.
- ✓ Right & Left Entry points for connection of ducting pipe to unit.
- ✓ Cyclonic Filtration System utilising HFPC filter for added motor protection.
- ✓ Also offering Dual Filtration Compatibility; allowing optional Disposable Filter bag to be fitted if required with Bag Conversion Kit.
- ✓ Large capacity dirt receptacle easily emptied by releasing two clamping latches that provide a hermetic vacuum seal between motor base housing and dirt receptacle.
- ✓ Single printed circuit board control module complete with,
  - ✓ - on/off switch for operating inlet point on power unit.
  - ✓ - terminals for extra low voltage remote connections for inlet points inside house.
  - ✓ - IEC type socket and lead for power mains connection.
  - ✓ - dual LED technology status indicators for visual standby and operating modes.
- ✓ Manufactured to meet with all relevant Electrical Safety Standards in Australia and complies with the EMC emission standard AS/NZS 1044. Power units are all marked with the approved marking, , and registration number N1461.
- ✓ Powered by High Efficiency Ametek 2 Stage 145mm Turbine Flow Through Commercial grade vacuum motor with Temperature sensitive overload protection.
- ✓ Tangential discharge of outgoing air allows unit to be fitted with Silencer for added exhaust noise reduction and allows for venting to outside for 100% filtration.



Model ducted vacuum  
**SP elite**



**electron**  
Est. 1981 Vacuum Systems  
(Aust) Pty Ltd  
www.vacuum.com.au

CLEANER LIVING



# EVS

next generation

# EVS



Model ducted vacuum  
**SP elite**

## SPECIFICATIONS

### Vacuum Motor Specifications

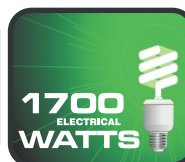
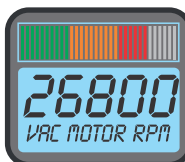
Tangential By-pass discharge	•
Flow Through discharge	•
Double ball bearings	•
Diameter of Motor mm	145
Air Watts	750
Airflow l/s (max.)	61
Sealed Vacuum mm H2O (max.)	3550
RPM @19mm working orifice	26800
Label Rated Electrical Watts	1700
Noise Level dbA with Silencer @ 3m	59.0
Temperature Sensitive Thermal Protector	•
Control Circuit 12 V DC	•
Control Current 100mA	•
Nominal Voltage 240 V AC	•
Nominal Frequency 50 Hertz	•

### Power Unit Physical Specifications

Overall Height (mm)	840
Overall Diameter (mm)	310
Overall Weight (kg)	7.5
Dual Filtration Compatible System	•
Cyclonic Filtration (Standard)	•
HFPC Filter Cartridge	•
Filter Bag Filtration	•
Silencer for Exhaust	•
Left & Right ducting entry points	•
Direct Inlet point with On/Off switch	•
Wall Mounting of Power Unit	•
Body Housing Construction	ABS
Dirt Capacity litres	25



Specifications Subject to Change without Notice



**electron**  
Est. 1981 Vacuum Systems  
(Aust) Pty Ltd  
www.vacuum.com.au



CLEANER LIVING